

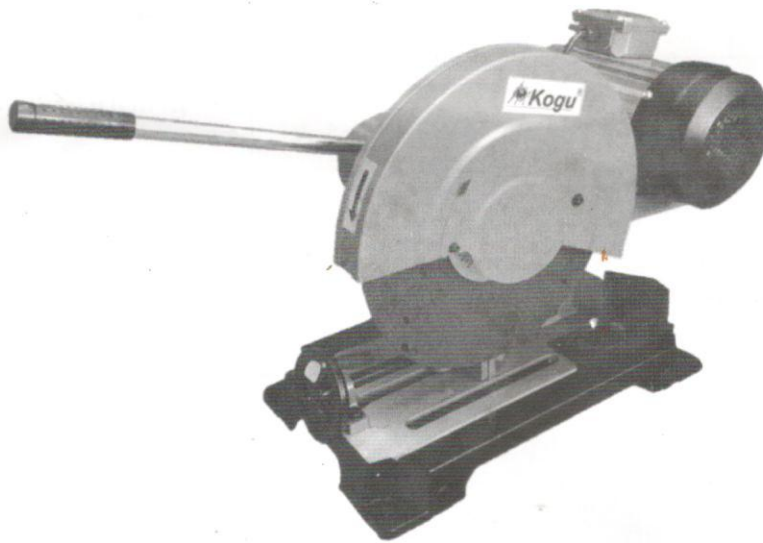


MC401

CUT-OFF

MC-401S (230V) Single phase

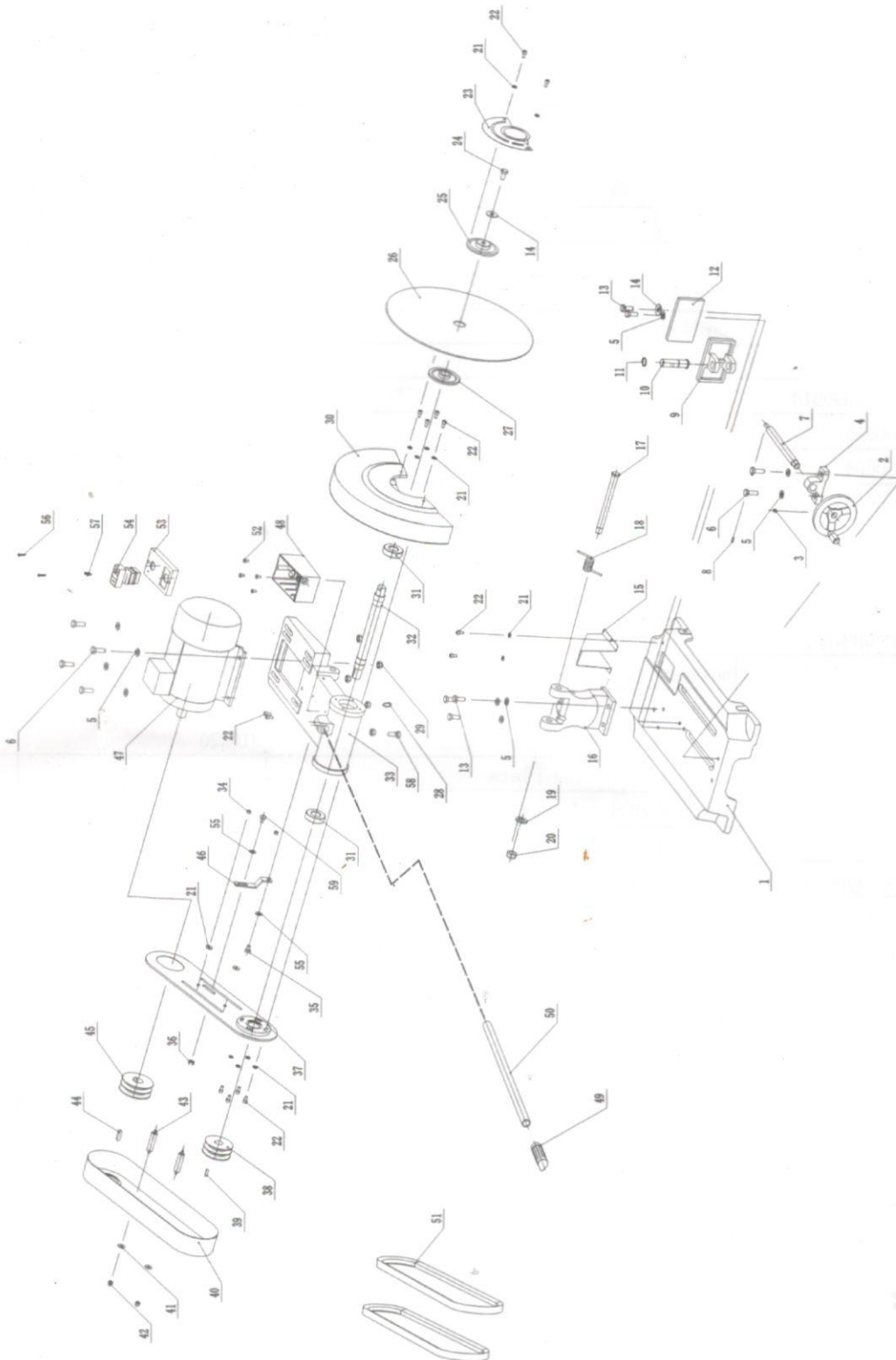
MC-401T (400V) Three phase



CE

Kogou 2018

9. Assembly Breakdown



10. Parts List for Breakdown

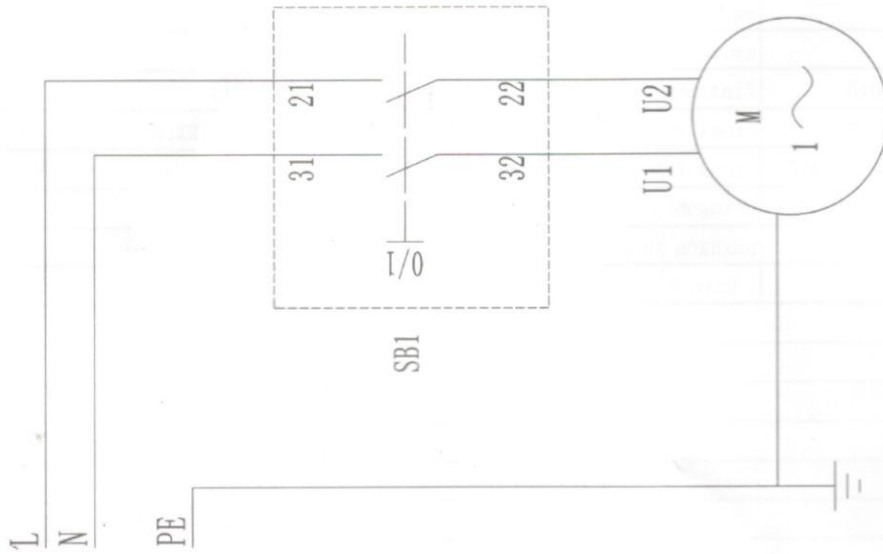
IndexID	Part no.	Description	Size	Qty.
1	QGJ400001-02	base		1
2	QGJ400025	handle assembly		1
3	M6X6 GB77B	hexagon socket set screw with flat point	M6X6	1
4	QGJ400013	screw fixing seat		1
5	WSH10 GB97D1B	flat washer	10	10
6	M10X30 GB5781B	hexagon bolt	M10X30	6
7	QGJ400012	screw		1
8	PIN4X12 GB119.1	vol	4X12	1
9	QGJ400003-02	clamping plate		1
10	QGJ400009-02	plate pin		1
11	CLP18 GB894D1B	external circlip	18	1
12	QGJ400002-02	angle device		1
13	M10X25 GB5781B	hexagon bolt	M10X25	5
14	WSH10 GB96D1B	enlarged flat washer	10	2
15	QGJ400015	row pin cover		1
16	QGJ400004	conneting base		1
17	QGJ400010	lintel shaft		1
18	QGJ400014	torsional spring		1
19	WSH16 GB97D1Z	flat washer	16	1
20	M16 GB6128Z	self-locking nut	M16	1
21	WSH6 GB97D1B	flat washer	6	14
22	M6X12 GB70D1B	hexagon socket head cap screw	M6X12	14
23	QGJ400020-02	cover plate		1
24	M10X20 GB5781B	hexagon bolt	M10X20	1
25	QGJ400008B	external clamping plate		1
26	400*Φ25.4*3.2mm	cutting disk	400*Φ25.4*3.2mm	1
27	QGJ400008A	internal clamping plate		1
28	CLP25 GB894D1B	external circlip	25	2
29	M10 GB6170B	nuts	M10	4
30	QGJ400019-02	grinding wheel cover		1
31	BRG6205GB276	bearing	6205	2
32	QGJ400011	spindle		1
33	QGJ400005	bracket		1
34	M6 GB6170Z	nuts	M6	2
35	M8X12 GB5781B	hexagon bolt	M8X12	2
36	M8 GB6170B	nuts	M8	1
37	QGJ400032	internal belt cover		1
38	QGJ400006	spindle pulley		1
39	PIN6X6X20 GB1096	flat key	6X6X20	1
40	QGJ400018	blet cover		1
41	WSH6 GB96D1Z	enlarged flat washer	6	4
42	M6 GB923Z	cap nut	M6	2
43	QGJ400033	support rod		2
44	PIN8X7X30 GB1096	flat key	8X7X30	1
45	QGJ400007-01	motor pulley		1
46	QGJ400036	shield support		1

Parts List for Breakdown

47	3.0-100-2/L	motor	3.0-100-2/L	1
48	QGJ400034	switch box		1
49	QGJ400026	handle set		1
50	QGJ400022	handle lever		1
51	LI864	v-belt	LI864	2
52	M5X10 GB818Z	cross head screw	M5X10	4
53	QGJ400035	switch cover		1
54	KA0-5	switch		1
55	WSH8 GB97D1B	flat washer	8	3
56	ST4.2X16 GB845Z	cross head self-tapping screw	4.2X16	2
57	ST4.2X9.5 GB845Z	cross head self-tapping screw	4.2X9.5	3
58	M10X65 GB5781B	hexagon bolt		1
59	M8X16 GB5781B	hexagon bolt	M8X16	1

11. Wiring diagram

1~230V

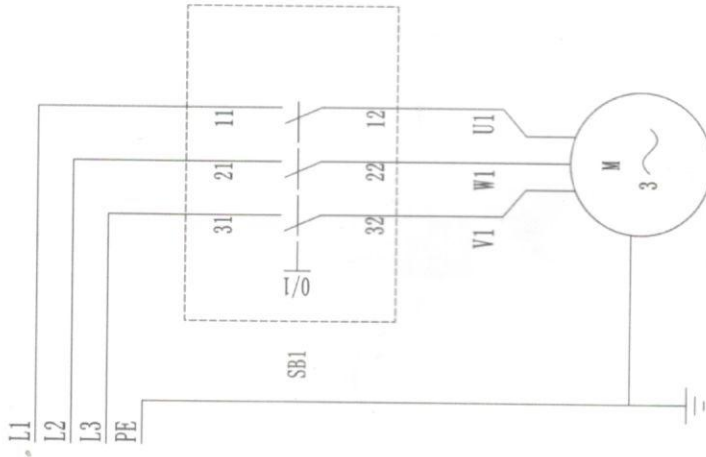


Electrical parts list

IndexID	PCPNo	Description	TYPE
1	SB1	switch	KA0-5
2	M	Motor (YL100L-2)	230V 3KW 50HZ

12.Wiringdiagram

3~400V



Electricalpartslist

IndexID	PCPNo	Description	TYPE
1	SB1	switch	KA0-5
2	M	Motor (YE2-100-2)	380V 3KW 50HZ